

# Engage



Investigate the geographical hypothesis, 'The school field is the best location for an allotment.' Work together to answer the hypothesis, considering the information given and using the score sheets to guide you. Each group will present and explain their conclusions.

## Year 5 – Autumn 1 Sow, Grow and Farm

We will create a planting area to plant some vegetables. We will assess the soil's suitability, consider the climate and how that will impact growth and monitor the growth of our crops!



# Express



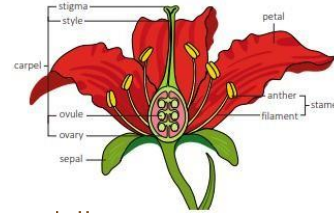
### The children will learn about:

#### English:

- Narrative – English heritage. The Selfish Giant
- Poetry – Allotment poems
- Instruction Writing – Vegetable casserole recipe
- Class book – Sky Song (by Abi Elphinstone)

#### Science:

- \* Life Cycles



#### Geography:

- Land use and map skills
- Climate zones and food miles

#### Art:

- Still life sketching and drawing techniques
- Watercolours



#### RE:

- \* Religions in our local community

#### PSHE:

- Class rules
- \* Anti-bullying
- \* Being Me In My World.

#### PE:

- \* Quidditch and Yoga

# Develop



The **polar zone** is cold and dry with long, dark winters. Average temperatures are 0°C to -47°C.



The **temperate zone** has warm summers, cool winters and year-round rainfall. Average temperatures are 0°C to 20°C.



The **desert zone** is hot year-round and has very little rainfall. Average temperatures are 35°C to 40°C.

#### Music:

- \* 'Livin' on a prayer' (Bon Jovi)

#### French

- \* Francophones

#### DT

- \* Vegetable Casserole

#### Computing:

- \* We are Game Developers!

