

Engage



Investigate the geographical hypothesis, 'The school field is the best location for an allotment.'

Work together to answer the hypothesis, considering the information given and using the score sheets to guide you. Each group will present and explain their conclusions.

Year 5 – Autumn 1

Sow, Grow and Farm

We will create a planting area to plant some vegetables. We will assess the soil's suitability, consider the climate and how that will impact growth and monitor the growth of our crops!



Express



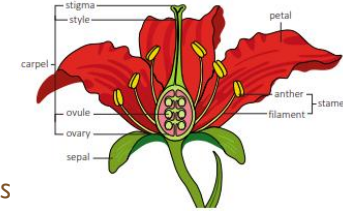
The children will learn about:

English:

- Narrative – English heritage. The Secret Garden
- Poetry – Allotment poems
- Instruction Writing – Vegetable soup recipe
- Class book – Sky Song (by Abi Elphinstone)

Science:

- * Life Cycles



Geography:

- Land use and map skills
- Climate zones and food miles

Art:

- Still life sketching and drawing techniques
- Watercolours



Other areas of learning:

Maths:

- * Number - Place Value
- * Number – Addition (+) and Subtraction (-)

RE:

- * Religions in our local community

Music:

- * 'Livin' on a prayer' (Bon Jovi)

PSHE:

- Class rules
- * Anti-bullying
- * Being Me In My World.

French

- * Francophones

DT

- * Cooking vegetable soup

PE:

- * Football and Dance

Computing:

- * We are Game Developers!

Develop



The **polar zone** is cold and dry with long, dark winters. Average temperatures are 0°C to -47°C.



The **temperate zone** has warm summers, cool winters and year-round rainfall. Average temperatures are 0°C to 20°C.



The **desert zone** is hot year-round and has very little rainfall. Average temperatures are 35°C to 40°C.

